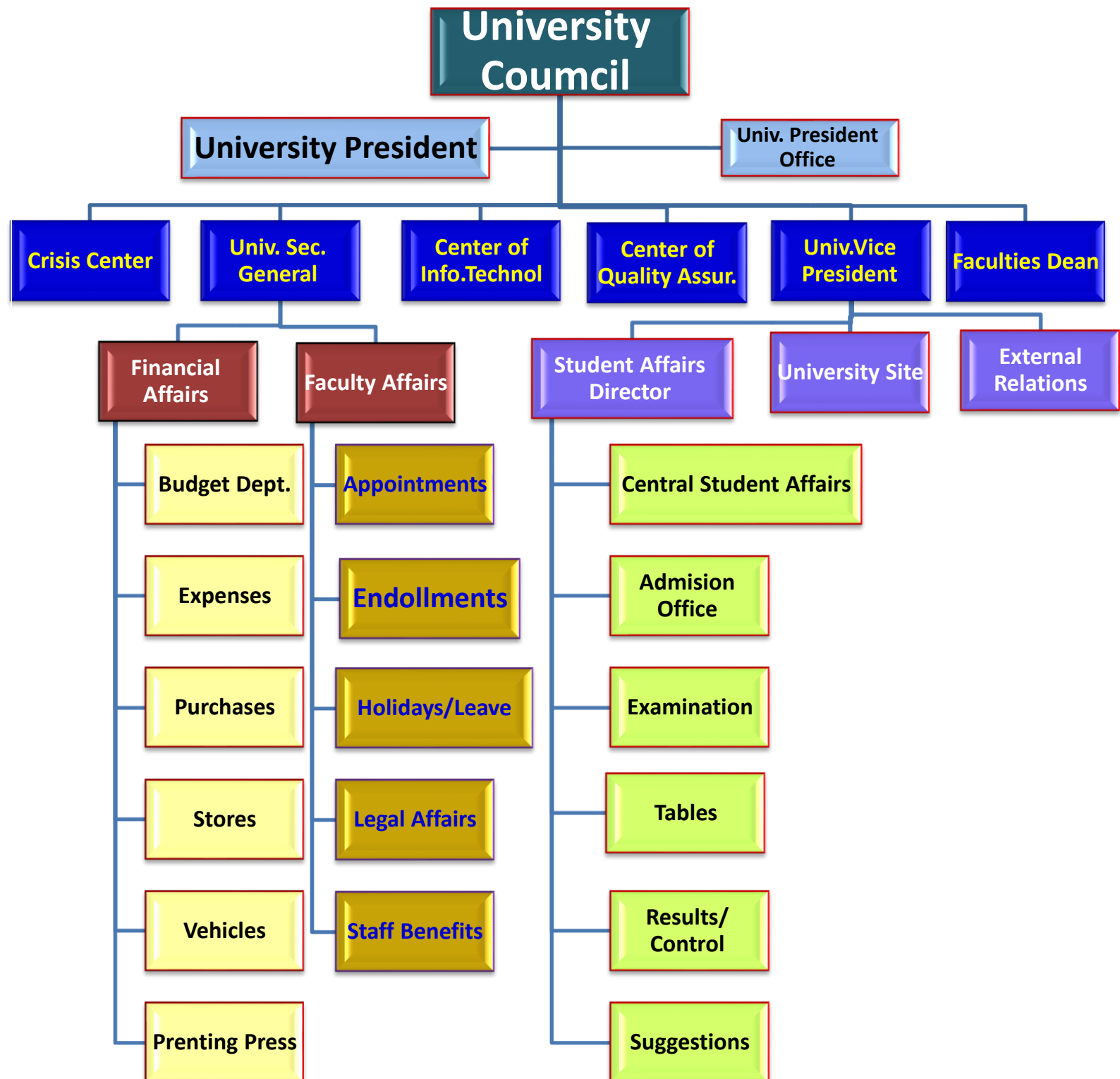


# **Organization Structure of Rashid University**

# Organizational Structure of Rashid University



# Organizational and administrative structure of the faculty

## College Council

College Dean

Dean's Office

College Secretary

Crisis Unite

IT Unite

Vice Dean

QA Unite

Dept. Heads

Stores

Holidays/Leaves

Laboratories

Dervices

Maintenance  
Dept.

Tables  
Committee

Examinations  
Committee

Academic  
Advisory  
Committee

Student Support  
Committee

Control  
Committee

Evaluation  
Committee

Professor

Assitant  
Professor

Lecturer

Faculty Auxillary  
Body

# Quality Assurance Center

**University Council**

**University President**

**Qual. Assur. Council**

**Director of QA Center**

**Beneficiaries**

**QA Consultant**

**QA Unites**

**Presedent of  
Student Union**

**Director of  
quality units in  
college**

**Follow-up and technical  
support unit**

**Training and Awareness Unit**

**Planning - Evaluation -  
Measurement Unite**